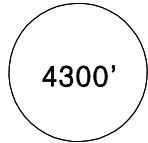
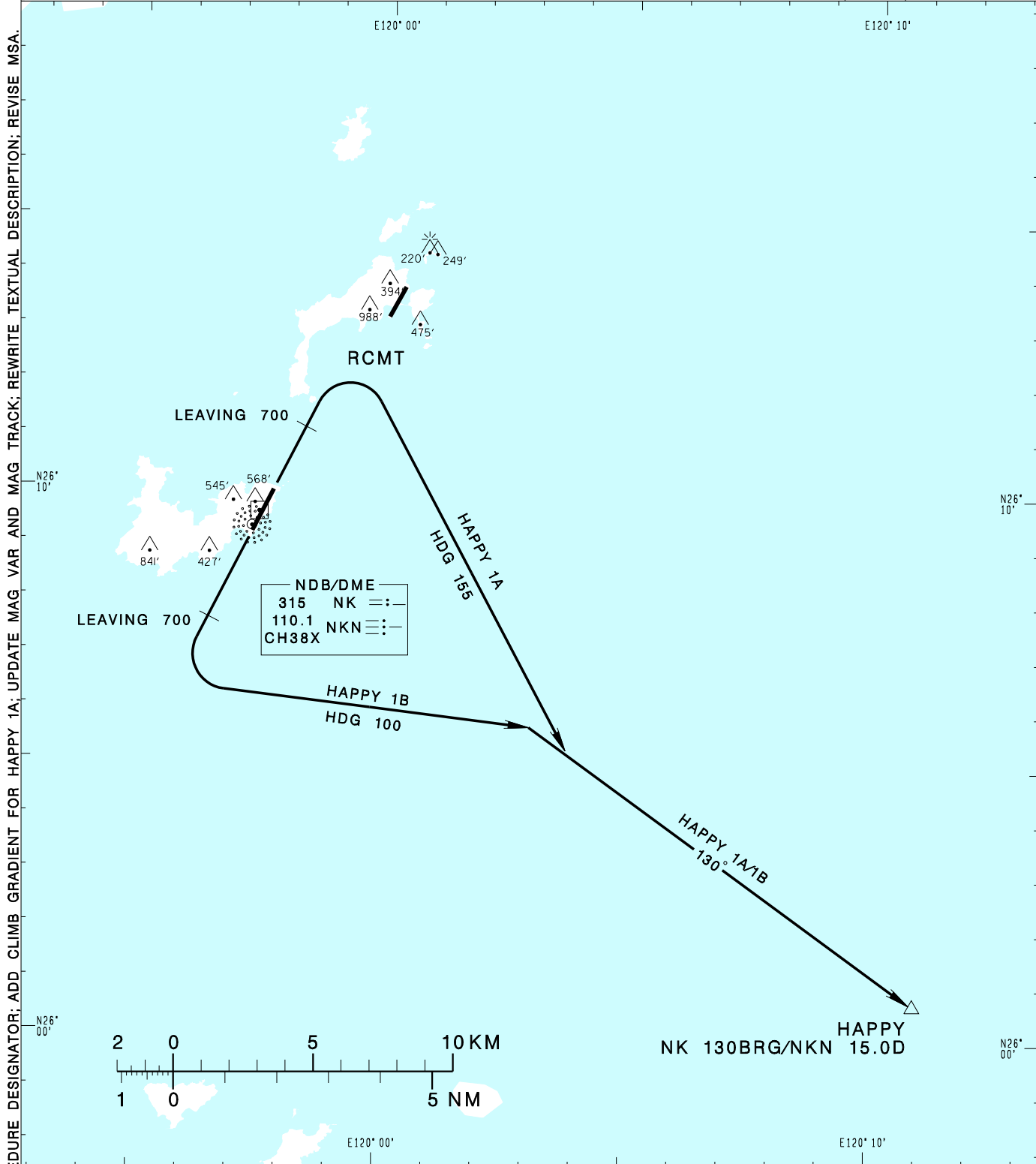


馬祖/南竿機場
MATSUNANGAN AD

RCFG SID
HAPPY 1A(RWY03)
HAPPY 1B(RWY21)

TAIPEI APP 121.0 122.3	NANGAN TWR 118.55	ATIS 127.95	VAR 5° W-2024		
Apt Elev: 232'		Trans Level: FL130			Trans Alt: 11,000'
BEARINGS ARE MAGNETIC; DISTANCES ARE NAUTICAL MILES; ELEVATIONS, HEIGHTS IN FEET * CAA AUTHORIZATION REQUIRED IN ADVANCE					



HAPPY ONE ALFA DEPARTURE
Climb on RWY HDG until leaving 700ft, then turn right HDG 155 to track NK 130BRG to HAPPY.

HAPPY ONE BRAVO DEPARTURE
Climb on RWY HDG until leaving 700ft, then turn left HDG 100 to track NK 130BRG to HAPPY.

NOTE

- HAPPY 1A: Minimum climb gradient required: 4.0%(244ft/NM) until 1,200ft.
- Takeoff minima: VIS: 3,200m CEIL: 600ft
- CAUTION HIGH TERRAIN NEAR THE AIRPORT.
- For CAT A/B aircraft only.
- ATS Surveillance required.